



Apartment Features*

- Spacious 3 and 4 bedroom floorplans
- Tile flooring throughout
- Washer and dryer in every home
- Fully equipped kitchens with pantry
- Ceiling fans

Goldonna Subdivision has all the elements of a great lifestyle at an affordable price. Here, you'll find a tradition of excellence in everything from our impeccable service to our quality construction. Our spacious homes reflect timeless elements of style and are designed with the comfort and convenience you desire.

Our mission is to be recognized as the leader in the affordable housing market by providing an exceptional living community with unparalleled service to our residents. We fulfill this mission in a style focused on excellence and commitment.

Come visit Goldonna Subdivision today!



Community Amenities

- Covered carport
- Outside storage
- Spacious lots with front and back yards
- Playground
- Community Room
- 24-Hour Emergency Maintenance
- Professional On-Site Leasing Office / Manager

4705 Natchez Street
Alexandria, LA 71302

(318) 445-3530
(318) 449-3665 Fax



goldonnaalexandria.com

*Availability may be limited to select apartments only.
Subject to change with out notice.

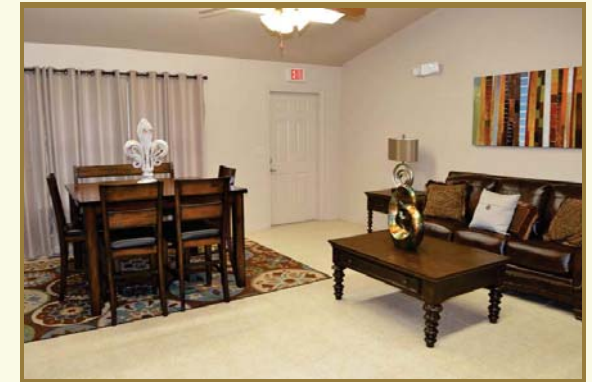
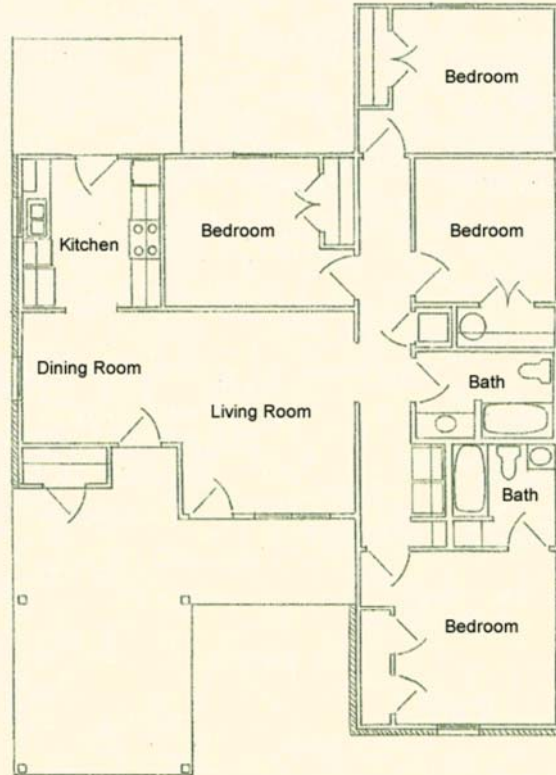
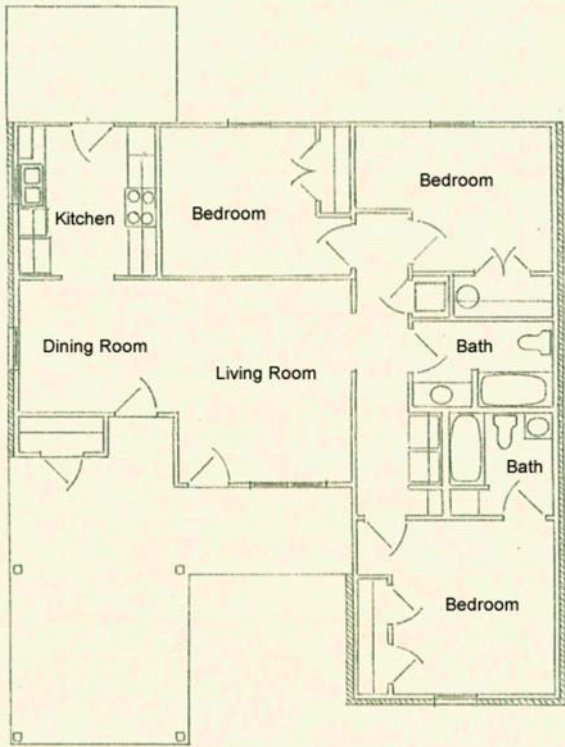


(318) 445-3530

3 Bedroom / 2 Bath RENT _____
1128 Sq. Ft.* DEPOSIT _____

4 Bedroom / 2 Bath RENT _____
1436 Sq. Ft.* DEPOSIT _____

Enjoy life within this inspired neighborhood, convenient to everything Alexandria has to offer. Experience fine living with new friends. In addition, our professionally trained staff is prepared to meet your expectations with extraordinary service and care.



4705 Natchez Street
Alexandria, LA 71302



*Square footage is approximate Actual floorplans may vary

(318) 445-3530

goldonnaalexandria.com